

March 20th 2004

User Guide One to improve Neptune II

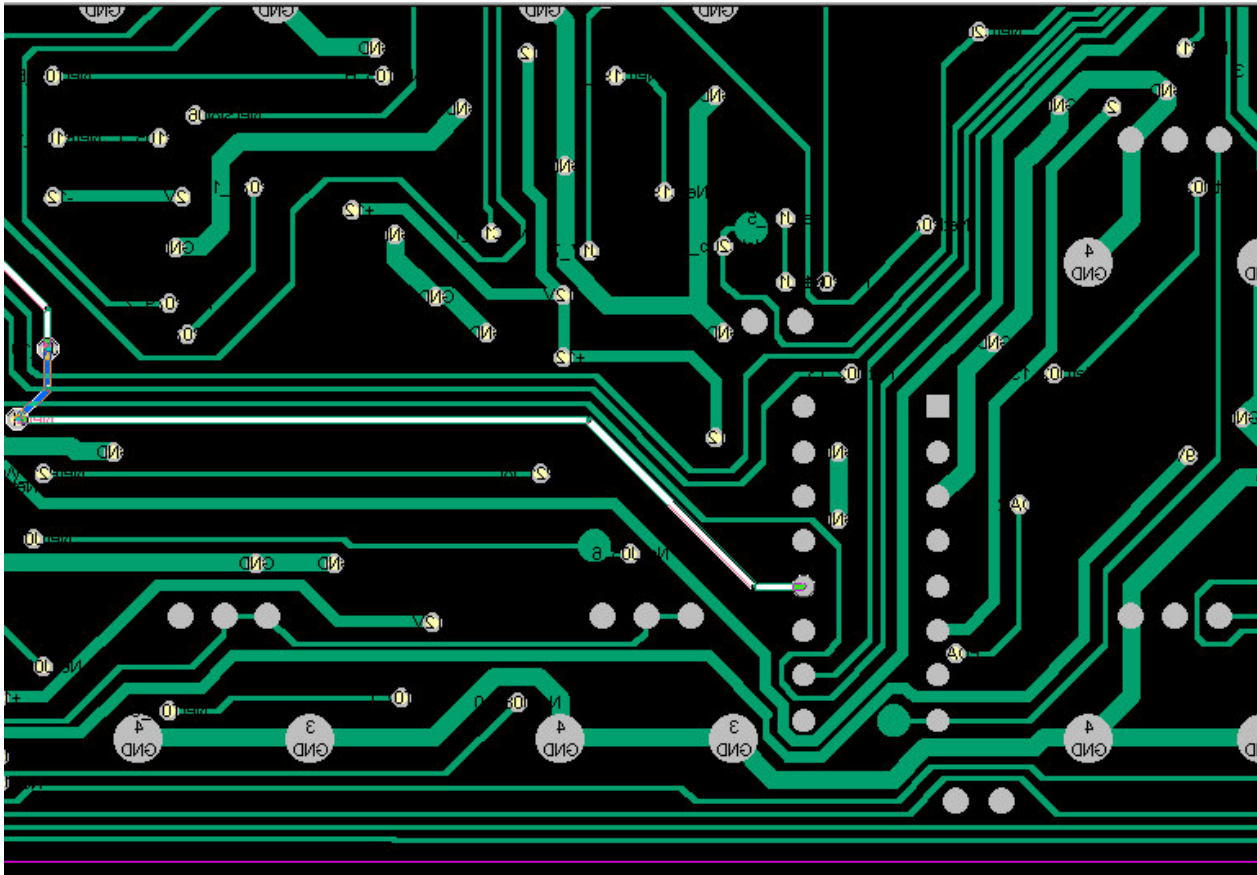
Oscillator(s) breakthrough

Some people may noted that the Oscs may be hear able even the VCA is closed. Especially Osc2 at higher Frequencies. It is a problem of over talk on some tracks on the pcb.

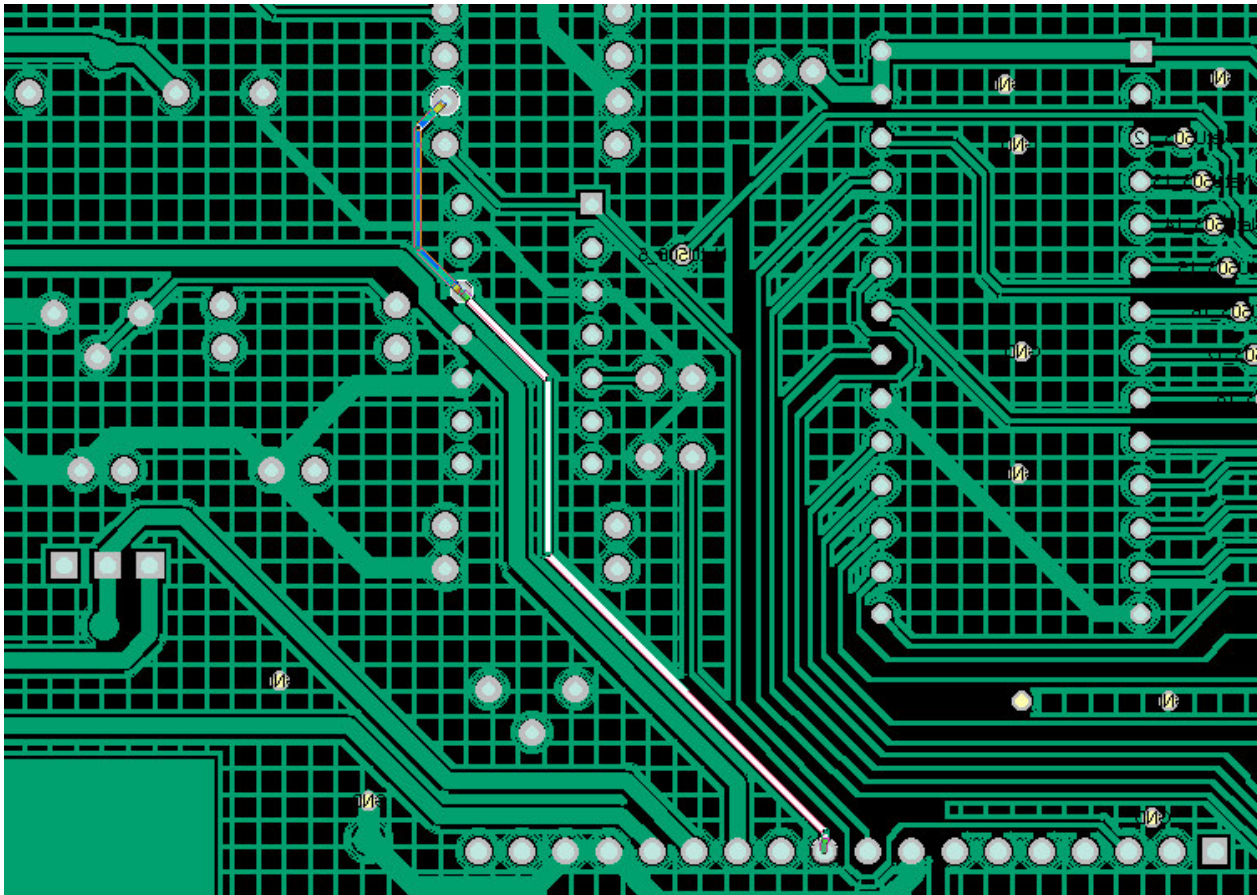
To have the best possible S/N ratio on an analog Synthesizer general, we strongly recommend to have the internal mixer section always full on, i.e. if one choose for Osc1, put this pot to 100%, not only to the half. The same is with Volume. 100% there and take down the level on the external mixer.

To improve the S/N ratio on the Neptune II we recommend the following procedure: (it is done from serial number **50131** by factory).

On the analog pcb (big one) cut the white track at the IC (on backside):



On the small pcb cut the white track at the IC (bottom side):



With a wire do a connection from the pin were you cut away the track on the analog pcb to R500 (right pin on this picture):

